

**folex**<sup>®</sup>

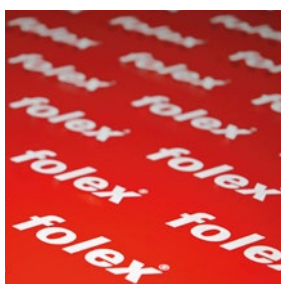
## FILMS AND PAPERS

For printers and copiers



the fine art of coating

DIGITAL  
PRINTING



<b>PICTOGRAM OVERVIEW</b>	<b>3</b>
<b>TONER COLOUR</b>	<b>4 – 9</b>
Premium tear proof film .....	4 – 6
Premium photo paper.....	6
Premium adhesive films.....	7
Standard adhesive films.....	8 – 9
<b>TONER B/W</b>	<b>10 – 11</b>
Standard tear proof film .....	10
Premium repro film.....	10
Standard repro film.....	11
Standard adhesive films.....	11
<b>INK JET</b>	<b>12 – 15</b>
Standard photo paper.....	12
Premium adhesive films.....	13
High-End adhesive films .....	14
Premium backlit film.....	15
Premium repro film.....	15
<b>T-SHIRT TRANSFER – INK JET</b>	<b>16</b>
Premium T-Shirt transfer .....	16
<b>T-SHIRT TRANSFER – TONER COLOUR</b>	<b>17</b>
Premium T-Shirt transfer .....	17
<b>OHP – TONER COLOUR</b>	<b>18 – 19</b>
Premium Universal OHP films.....	18
<b>OHP – TONER B/W</b>	<b>20 – 21</b>
Premium OHP films.....	20
Standard OHP film.....	20
Premium aqualine universal OHP films .....	20
Premium universal OHP films .....	21
Standard universal OHP film.....	21
<b>OHP – INK JET / OHP – UNIVERSAL</b>	<b>22</b>
Premium OHP films.....	22
Premium universal OHP film.....	22
<b>WRITE ON</b>	<b>23</b>

# PICTOGRAMS

## PICTOGRAM OVERVIEW



Suitable for Ink Jet printer



Suitable for colour laser printer



Suitable for mono laser printer



Suitable for colour copier



Suitable for mono copier



Also suitable for machines with high fixing temperature



Removable stripe for sensor detection



Heat press activation



Electric iron activation



Offers improved water resistance



Paperbacked short side



Paperbacked long side



Removable stripe short side









Removable stripe long side



# TONER COLOUR

## PREMIUM TEAR PROOF FILM

Glossy white film provides brilliant, vibrant images onto tear free polyester which does not require lamination. The glossy surface provides a tough, wipe clean finish. The imaged film has outstanding toner bonding and good water resistance. Ideal for long life, archival applications and as a universal colour toner film. It has the same printable coating on both sides and is available in a variety of different thicknesses. To produce durable manuals, outdoor signs, point of sale, point of purchase, charts, maps, signage, menu cards etc. Ultimate performance for high speed printers, copiers and digital presses. We recommend testing for suitability with 0.250 mm.


■ BG-72 WO										
White, glossy	0.125 mm	50	210 mm x 297 mm	29729.125.44100						
Polyester	0.125 mm	100	210 mm x 297 mm	29729.125.44000						
	0.125 mm	500	210 mm x 297 mm	29729.125.44800						
	0.125 mm	50	297 mm x 420 mm	29729.125.43100						
	0.125 mm	500	297 mm x 420 mm	29729.125.41800						
	0.180 mm	100	210 mm x 297 mm	29729.180.44000						
	0.180 mm	500	210 mm x 297 mm	29729.180.44800						
	0.180 mm	50	297 mm x 420 mm	29729.180.43100						
	0.250 mm	50	210 mm x 297 mm	29729.250.44100						
	0.250 mm	50	297 mm x 420 mm	29729.250.43100						

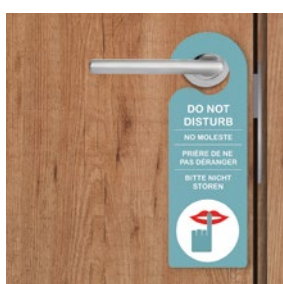


# TONER COLOUR

## PREMIUM TEAR PROOF FILM

Matt white film provides brilliant, vibrant images onto tear free polyester which does not require lamination. The imaged film has outstanding toner bonding and good water resistance. Ideal for long life, archival applications and as a universal colour toner film. It has the same printable coating on both sides and is available in a variety of different thicknesses. To produce durable manuals, outdoor signs, point of sale, point of purchase, charts, maps, signage, menu cards etc. Ultimate performance for high speed printers, copiers and digital presses. We recommend testing for suitability with 0.265 mm and 0.350 mm.


▪ Longlife Pro Matt WO					
White, matt	0.090 mm	100	210 mm x 297 mm	29738.090.44000	
Polyester	0.090 mm	500	210 mm x 297 mm	29738.090.44800	
	0.090 mm	50	297 mm x 420 mm	29738.090.43100	
	0.115 mm	100	210 mm x 297 mm	29738.115.44000	
	0.115 mm	500	210 mm x 297 mm	29738.115.44800	
	0.115 mm	50	297 mm x 420 mm	29738.115.43100	
	0.140 mm	100	210 mm x 297 mm	29738.140.44000	
	0.140 mm	500	210 mm x 297 mm	29738.140.44800	
	0.140 mm	50	297 mm x 420 mm	29738.140.43100	
	0.190 mm	100	210 mm x 297 mm	29738.190.44000	
	0.190 mm	500	210 mm x 297 mm	29738.190.44800	
	0.190 mm	50	297 mm x 420 mm	29738.190.43100	
	0.265 mm	50	210 mm x 297 mm	29738.265.44100	
	0.265 mm	500	210 mm x 297 mm	29738.265.44800	
	0.265 mm	50	297 mm x 420 mm	29738.265.43100	
	0.350 mm	50	210 mm x 297 mm	29738.350.44100	
	0.350 mm	250	210 mm x 297 mm	29738.350.44700	
	0.350 mm	50	297 mm x 420 mm	29738.350.43100	



# TONER COLOUR




## STANDARD TEAR PROOF FILMS

Matt white film provides brilliant, vibrant images onto tear free polyester which does not require lamination. The imaged film has outstanding toner bonding and good water resistance. Ideal for long life, archival applications and as a universal colour toner film. It has the same printable coating on both sides. To produce durable manuals, outdoor signs, point of sale, point of purchase, charts, maps, signage, menu cards etc.

<span>■ Signolit SC 22</span>   				
White, matt	0.140 mm	100	210 mm x 297 mm	38022.140.44000
Polyester	0.140 mm	100	297 mm x 420 mm	38022.140.43000

## PREMIUM PHOTO PAPER

Glossy photo paper FSC accredited and printable on both sides, suitable for colour laser printers or copiers. The super smooth gloss surface guarantees your coloured images are brilliant with crisp, vibrant reproduction. This paper is perfect to show off any presentation or report that uses graphics or photographs to add impact. Available in a variety of weights from 130 gsm for flyers up to 200 gsm.

<span>■ Color Laser Paper</span>   				
White, glossy	130 gsm	100	210 mm x 297 mm	29800.130.44000
	130 gsm	1	914 mm x 100 m	29800.130.39400
	150 gsm	100	210 mm x 297 mm	29800.150.44000
	150 gsm	500	210 mm x 297 mm	29800.150.44800
	170 gsm	100	210 mm x 297 mm	29800.170.44000

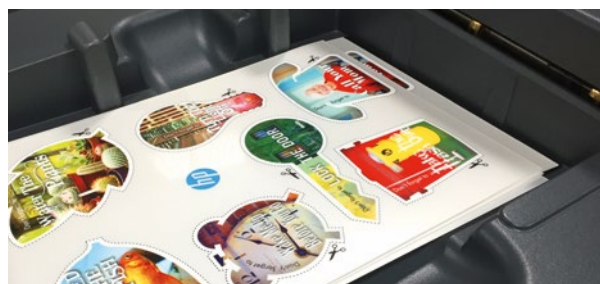


# TONER COLOUR

## PREMIUM ADHESIVE FILMS

Clear, glossy or matt white opaque permanent acrylic self-adhesive polyester film with a paper release liner. Ideal for stickers, signs, decals and posters. It is tear resistant and can be used in internal or external conditions. The imaged film has outstanding toner bonding and good water resistance. HT version is suitable for all printers including high temperature models. Ultimate performance for high speed printers, copiers and digital presses.

<div style="display: flex; justify-content: flex-end; align-items: center; gap: 10px;">      </div>				
<ul style="list-style-type: none"> <li>CLP Adhesive P CL</li> </ul>				
Clear, glossy	0.050 mm	50	210 mm x 297 mm	2999C.050.44100
Permanent, Polyester	0.050 mm	500	210 mm x 297 mm	2999C.050.44800
	0.050 mm	50	297 mm x 420 mm	2999C.050.43100
<div style="display: flex; justify-content: flex-end; align-items: center; gap: 10px;">      </div>				
<ul style="list-style-type: none"> <li>CLP Adhesive P WO</li> </ul>				
White, glossy	0.050 mm	50	210 mm x 297 mm	2999W.050.44100
Permanent, Polyester	0.050 mm	500	210 mm x 297 mm	2999W.050.44800
	0.050 mm	50	297 mm x 420 mm	2999W.050.43100
<div style="display: flex; justify-content: flex-end; align-items: center; gap: 10px;">      </div>				
<ul style="list-style-type: none"> <li>CLP Adhesive HT CL</li> </ul>				
Clear, glossy	0.050 mm	50	210 mm x 297 mm	2999D.050.44100
Permanent, Polyester	0.050 mm	500	210 mm x 297 mm	2999D.050.44800
	0.050 mm	50	297 mm x 420 mm	2999D.050.43100

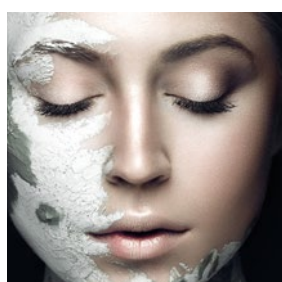


# TONER COLOUR

## STANDARD ADHESIVE FILMS

Translucent matt, clear glossy, white matt and glossy, gold and silver permanent acrylic self-adhesive polyester film, with a paper release liner. Ideal for stickers, signs, decals and posters. It is tear resistant and can be used in internal or external conditions. The imaged film has outstanding toner bonding and good water resistance.

<div style="display: flex; justify-content: flex-end; align-items: center; gap: 10px;">      </div>				
<ul style="list-style-type: none"> <li>■ Signolit SC 40</li> </ul>				
Translucent, matt	0.060 mm	100	210 mm x 297 mm	38040.050.44000
Permanent, Polyester	0.060 mm	500	210 mm x 297 mm	38040.050.44800
	0.060 mm	40	297 mm x 420 mm	38040.050.43100
	0.060 mm	500	297 mm x 420 mm	38040.050.41800
	<div style="display: flex; justify-content: flex-end; align-items: center; gap: 10px;">      </div>			
<ul style="list-style-type: none"> <li>■ Signolit SC 42</li> </ul>				
Clear, glossy	0.050 mm	100	210 mm x 297 mm	38042.050.44000
Permanent, Polyester	0.050 mm	500	210 mm x 297 mm	38042.050.44800
	0.050 mm	40	297 mm x 420 mm	38042.050.43100
	0.050 mm	500	297 mm x 420 mm	38042.050.41800
	<div style="display: flex; justify-content: flex-end; align-items: center; gap: 10px;">      </div>			
<ul style="list-style-type: none"> <li>■ Signolit SC 44</li> </ul>				
White, matt	0.060 mm	100	210 mm x 297 mm	38044.050.44000
Permanent, Polyester	0.060 mm	500	210 mm x 297 mm	38044.050.44800
	0.060 mm	40	297 mm x 420 mm	38044.050.43100
	0.060 mm	500	297 mm x 420 mm	38044.050.41800
	<div style="display: flex; justify-content: flex-end; align-items: center; gap: 10px;">      </div>			
<ul style="list-style-type: none"> <li>■ Signolit SC 46</li> </ul>				
White, glossy	0.050 mm	100	210 mm x 297 mm	38046.050.44000
Permanent, Polyester	0.050 mm	500	210 mm x 297 mm	38046.050.44800
	0.050 mm	40	297 mm x 420 mm	38046.050.43100
	0.050 mm	500	297 mm x 420 mm	38046.050.41800





# TONER COLOUR

## ■ Signolit SC 48



Gold, glossy	0.070 mm	100	210 mm x 297 mm	38048.050.44000
Permanent, Polyester	0.070 mm	500	210 mm x 297 mm	38048.050.44800
	0.070 mm	40	297 mm x 420 mm	38048.050.43100
	0.070 mm	500	297 mm x 420 mm	38048.050.41800

## ■ Signolit SC 50



Silver, glossy	0.070 mm	100	210 mm x 297 mm	38050.050.44000
Permanent, Polyester	0.070 mm	500	210 mm x 297 mm	38050.050.44800
	0.070 mm	40	297 mm x 420 mm	38050.050.43100
	0.070 mm	500	297 mm x 420 mm	38050.050.41800

## ■ Signolit SC 42

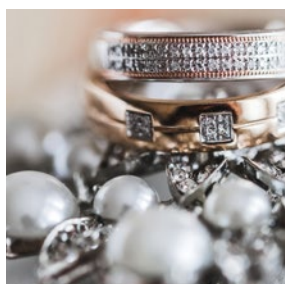


Clear, glossy	0.050 mm	1	914 mm x 50 m	38042.050.39300
Permanent, Polyester				

## ■ Signolit SC 44




White, matt	0.060 mm	1	914 mm x 5 m	38044.050.38700
Permanent, Polyester	0.060 mm	1	914 mm x 50 m	38044.050.39300




## STANDARD TEAR PROOF FILM

Glossy white film provides brilliant, vibrant images onto tear free polyester which does not require lamination. The glossy surface provides a tough, wipe clean finish. The imaged film has outstanding toner bonding and good water resistance. Ideal for long life, archival applications. It has the same printable coating on both sides. To produce durable manuals, outdoor signs, point of sale, point of purchase, charts, maps, signage, menu cards etc.

Long-Life				
White, glossy Polyester	0.100 mm	100	210 mm x 297 mm	30305.100.44000

## PREMIUM REPRO FILM

Matt translucent film perfect for creating positive or negative camera film artwork direct from your laser printer to screen. Text, graphs, halftones and line work designed on a Computer can be transferred directly, dry and without any chemical processing. The special surface gives excellent toner bonding and high visual contrast. Thicker 0.115 mm version for even higher dimensional stability and registration.

Folaproof Laserfilm/F				
Translucent, matt Polyester	0.090 mm	100	210 mm x 297 mm	09734.090.44000
	0.090 mm	100	297 mm x 420 mm	09734.090.43000
	0.115 mm	100	210 mm x 297 mm	09735.115.44000
	0.115 mm	100	297 mm x 420 mm	09735.115.43000



# TONER B/W

## STANDARD REPRO FILM

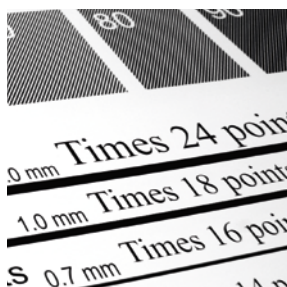
Polyester film, matt translucent, stable to heat. For DTP applications suitable. The films can be copied directly onto offset and screen printing plates.

■ Signolit SLZ				 	
Translucent, matt	0.095 mm	100	210 mm x 297 mm	38SLZ.050.44000	
Polyester	0.095 mm	100	297 mm x 420 mm	38SLZ.050.43000	

## STANDARD ADHESIVE FILMS


Self adhesive polyester film in matt translucent, clear transparent and matt white opaque with a silicon film release liner. It is tear resistant and is ideal for title blocks, technical drawings, signs, stickers or decals.

■ Adhesive-F MA				 	
Translucent, matt	0.050 mm	100	210 mm x 297 mm	26200.050.44000	
Polyester					
■ Adhesive-F CL				 	
Clear, glossy	0.050 mm	100	210 mm x 297 mm	26230.050.44000	
Polyester					
■ Adhesive-F WO				 	
White, matt	0.050 mm	100	210 mm x 297 mm	26240.050.44000	
Polyester					

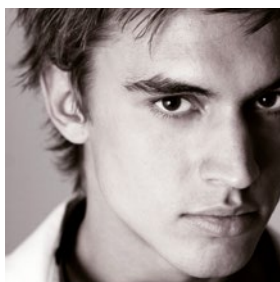


## STANDARD PHOTO PAPER

Gloss paper with a coating which absorbs inks instantly into the surface and produces good photo results. Papers can accept medium-high levels of ink with near instant drying with good flatness and colour brilliance. Glossy paper is a lower cost alternative to our Pro grade for photo images from your digital camera, photo CD etc.

▪ Fotojet Instant Dry					
White, glossy Cast coated	180 gsm	50	210 mm x 297 mm	23400.180.44100	

DIGITAL  
PRINTING



## PREMIUM ADHESIVE FILMS

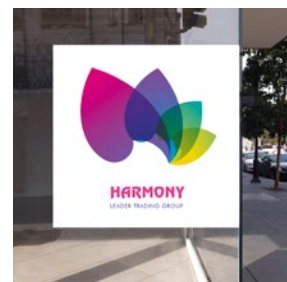
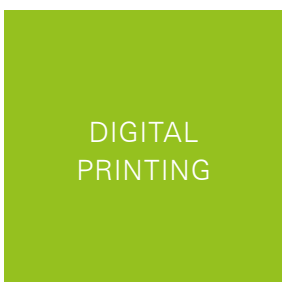
Clear or glossy white opaque permanent acrylic self-adhesive polyester film, with a paper release liner. Ideal for stickers, signs, decals and mock-ups. It is tear resistant and sticks to most clean surfaces.

Sticky Jet CL 				
Clear, glossy	0.050 mm	50	210 mm x 297 mm	2939C.050.44100
Permanent, Polyester	0.050 mm	500	210 mm x 297 mm	2939C.050.44800
Sticky Jet WO 				
White, glossy	0.050 mm	50	210 mm x 297 mm	2939W.050.44100
Permanent, Polyester	0.050 mm	500	210 mm x 297 mm	2939W.050.44800

## PREMIUM ADHESIVE FILM

Matt white vinyl calandered, monomeric permanent acrylic adhesive film. Ideal for stickers, signs, decals and mock-ups. It sticks to most clean surfaces.

Signolit SIV 				
White, matt	0.130 mm	40	210 mm x 297 mm	28V00.100.44100
Permanent, PVC	0.130 mm	250	210 mm x 297 mm	28V00.100.44700
	0.130 mm	40	297 mm x 420 mm	28V00.100.43100




## HIGH-END ADHESIVE FILM

White gloss, nano pigmented coating, offering high speed ink drying, vinyl calandered, monomeric permanent acrylic adhesive film. Ideal for stickers, signs, decals and mock-ups. It sticks to most clean surfaces.

SIVN					
Nano white, glossy	0.130 mm	100	210 mm x 297 mm	22VN0.100.44000	
Permanent, PVC	0.130 mm	250	210 mm x 297 mm	22VN0.100.44700	
	0.130 mm	40	297 mm x 420 mm	22VN0.100.43100	


## HIGH-END ADHESIVE FILM

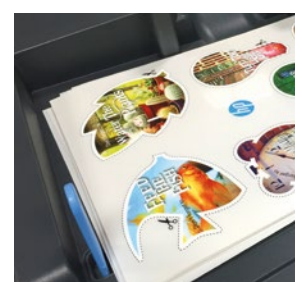
Clear vinyl calandered, monomeric removable acrylic adhesive film. Ideal for stickers, signs, decals and mock-ups. It sticks to most clean surfaces.

Signolit SIVK					
Clear, glossy	0.110 mm	100	210 mm x 297 mm	22VK0.100.44000	
Removable, PVC	0.110 mm	250	210 mm x 297 mm	22VK0.100.44700	
	0.110 mm	40	297 mm x 420 mm	22VK0.100.43100	

## HIGH-END ADHESIVE FILM

White gloss vinyl calandered, monomeric permanent acrylic adhesive film. Ideal for stickers, signs, decals and mock-ups. It sticks to most clean surfaces.

Signolit SIVW					
White, glossy	0.110 mm	100	210 mm x 297 mm	22VW0.100.44000	
Permanent, PVC	0.110 mm	250	210 mm x 297 mm	22VW0.100.44700	
	0.110 mm	40	297 mm x 420 mm	22VW0.100.43100	



## PREMIUM BACKLIT FILM

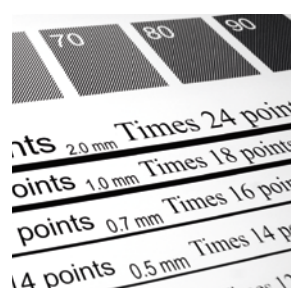
Matt translucent film suitable for backlit displays. Applications such as signage, lampshades and displays that use rear illuminated lighting to add impact. The special coating absorbs even large amounts of ink without an excessive drying time. By printing images in mirror reverse the image can be viewed through the now protective film base.

<span style="float: left;">▪ Backlit Jet</span>				
Translucent, matt	0.125 mm	50	210 mm x 297 mm	20146.125.44100
Polyester	0.125 mm	50	297 mm x 420 mm	20146.125.43100

## PREMIUM REPRO FILM

Nanoporous coated, clear transparent polyester film for the production of positive or negative film separations that can then be contact exposed to silk screens, pad or flexo plates. The HD version offers even higher ink absorption and faster drying times and an even greater UV density range with the optimisation of print settings. Images dry super fast due to a highly porous coating ensuring print speeds are further optimised. The film meets the highest demands with regard to image registration accuracy, dimensional stability and flatness. Finally it exhibits good mechanical, handling resistance.


<span style="float: left;">▪ Reprojct P HD</span>				
Clear, glossy	0.165 mm	100	210 mm x 297 mm	20490.165.44000
Polyester	0.165 mm	100	297 mm x 420 mm	20490.165.43000
	0.165 mm	50	329 mm x 483 mm	20490.165.43800



# T-SHIRT TRANSFER – INK JET


## PREMIUM T-SHIRT TRANSFER FOR WHITE AND LIGHT FABRIC

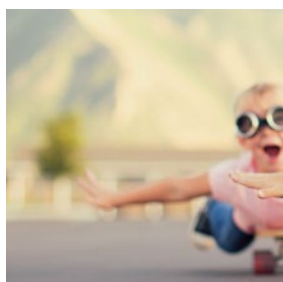
Special coated transfer paper to print your own graphic design or text onto white or light coloured T-shirts, caps, or any other cotton based fabric. Simply print your image in mirror mode, apply face down onto the fabric and then heat transfer using either a dedicated heat press or a household iron.

Transfer Jet ST			
10	210 mm x 297 mm	04100.000.51000	
50	210 mm x 297 mm	04100.000.44100	
500	210 mm x 297 mm	04100.000.44800	
50	297 mm x 420 mm	04100.000.43100	
500	297 mm x 420 mm	04100.000.41800	

## PREMIUM T-SHIRT TRANSFER FOR WHITE AND DARK FABRIC

Special coated transfer paper to print your own graphic design or text onto black, coloured or white T-shirts, caps, or any other cotton based fabric. Simply print your image, apply face up onto the fabric and then heat transfer using either a dedicated heat press or a household iron.

Transfer Jet Black			
5	210 mm x 297 mm	04250.000.50400	
50	210 mm x 297 mm	04250.000.44100	
500	210 mm x 297 mm	04250.000.44800	
50	297 mm x 420 mm	04250.000.43100	
250	297 mm x 420 mm	04250.000.41700	












# T-SHIRT TRANSFER – TONER COLOUR

## PREMIUM T-SHIRT TRANSFER FOR WHITE AND LIGHT FABRIC

Transfer Paper to print any image onto white or light T-Shirts or cotton based fabric. This product is universally suitable for oil and oil less colour toner engines. After printing simply transfer the image via a heat press. You can choose either a gloss or satin finish to your image when applied to the fabric. HT version is suitable for all printers including high temperature models.

				  
<ul style="list-style-type: none"> <li>▪ Textrans ST/S</li> </ul>				
Feeding edge short	50	210 mm x 297 mm	04807.000.44100	
	50	297 mm x 420 mm	04807.000.43100	
<ul style="list-style-type: none"> <li>▪ Textrans HT/S</li> </ul>				   
Feeding edge short	50	210 mm x 297 mm	04827.000.44100	
	50	297 mm x 420 mm	04827.000.43100	

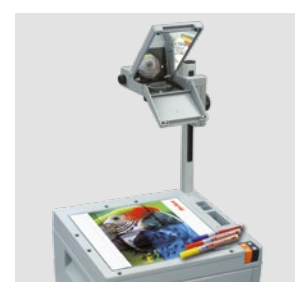


# OHP – TONER COLOUR

## PREMIUM UNIVERSAL OHP FILMS

Crystal clear film for printers and copiers. Ideally suited for overhead projection transparencies or see through overlays. The film uses the same universal coating on both sides, eliminating any confusion when inserting sheets into the feed tray. Available in a variety of different formats such as clear, removable stripe, paper-backing etc.

<div style="text-align: right;">  </div>				
<b>■ BG-71</b>				
Clear	0.100 mm	50	210 mm x 297 mm	29710.100.44100
Polyester	0.100 mm	100	210 mm x 297 mm	29710.100.44000
	0.100 mm	50	297 mm x 420 mm	29710.100.43100
<div style="text-align: right;">  </div>				
<b>■ BG-71.5 RS</b>				
Clear	0.100 mm	50	210 mm x 297 mm	29715.100.44100
Polyester	0.100 mm	100	210 mm x 297 mm	29715.100.44000
Removable stripe short side	0.100 mm	50	297 mm x 420 mm	29715.100.43100
<div style="text-align: right;">  </div>				
<b>■ BG-71.6 RS</b>				
Clear	0.100 mm	100	210 mm x 297 mm	29716.100.44000
Polyester				
Removable stripe long side				



# OHP – TONER COLOUR

## PREMIUM UNIVERSAL HIGH HEAT OHP FILM




Crystal clear heavy weight film, for high heat printers and copiers. Ideally suited for overhead projection transparencies or see through overlays. The film uses the same universal coating on both sides, eliminating any confusion when inserting sheets into the feed tray.

▪ BG-72						  
Clear	0.125 mm	50	210 mm x 297 mm	29720.125.44100		
Polyester	0.125 mm	100	210 mm x 297 mm	29720.125.44000		
	0.125 mm	50	297 mm x 420 mm	29720.125.43100		
	0.175 mm	50	210 mm x 297 mm	29720.175.44100		




## PREMIUM OHP FILMS

Coating suitable for most mono laser printers, superb toner bonding and good solid area density. It has smooth side for printing and a rougher side for feeding. BG-68 is a thermo-stabilized version for laser printers with high fusing temperature.

					
■ BG-67					
Clear	0.100 mm	50	210 mm x 297 mm	29670.100.44100	
Polyester					
					 
■ BG-68					
Clear	0.125 mm	50	210 mm x 297 mm	29680.125.44100	
Polyester	0.125 mm	50	297 mm x 420 mm	29680.125.43100	



## STANDARD OHP FILM

Clear film suitable for most mono laser printers. One smooth side for easy feeding, and a coated rougher side for good toner image bonding.

					
■ BG-64					
Clear	0.100 mm	50	210 mm x 297 mm	29640.100.44100	
Polyester	0.100 mm	50	297 mm x 420 mm	29640.100.43100	

## PREMIUM AQUALINE UNIVERSAL OHP FILMS

Solvent free waterbased environmentally friendly universal coating, suitable for dry toner copiers. X-520 series is a super heat treated film for copiers with very high fusing temperatures ensuring excellent flatness properties. Anti-static treated for good multiple feeding properties and superior toner bonding.

					
■ X-500					
Clear	0.100 mm	100	210 mm x 297 mm	35000.100.44000	
Polyester	0.100 mm	50	297 mm x 420 mm	35000.100.43100	
					 
■ X-520					
Clear	0.125 mm	100	210 mm x 297 mm	35200.125.44000	
Polyester					

# OHP – TONER B/W


## PREMIUM UNIVERSAL OHP FILMS

Coating suitable for dry toner copiers with excellent universal properties. X-130 series is a super heat treated film for copiers with very high fusing temperatures ensuring excellent flatness properties. Anti-static treated for good multiple feeding properties and superior toner bonding.

<ul style="list-style-type: none"> <li>X-100</li> </ul>					
Clear Polyester	0.100 mm	100	210 mm x 297 mm	31000.100.44000	
<ul style="list-style-type: none"> <li>X-102</li> </ul>					  
Clear Polyester Paper backed long side	0.100 mm	100	210 mm x 297 mm	31020.100.44000	
<ul style="list-style-type: none"> <li>X-130</li> </ul>					 
Clear Polyester	0.125 mm 0.125 mm	100 50	210 mm x 297 mm 297 mm x 420 mm	31300.125.44000 31300.125.43100	

## STANDARD UNIVERSAL OHP FILM

Coating suitable for dry toner copiers with good universal properties. Anti-static treated for good multiple feeding properties and good toner bonding.



<ul style="list-style-type: none"> <li>X-10.0</li> </ul>					
Clear Polyester	0.100 mm 0.100 mm	100 50	210 mm x 297 mm 297 mm x 210 mm	39100.100.44000 39100.100.43100	



# OHP – INK JET / OHP – UNIVERSAL








## PREMIUM OHP FILMS

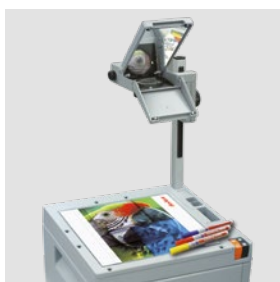
Clear film for OHP transparencies available in various formats such as clear for all printers except Hewlett Packard which require a removable stripe film for sensor detection. The film has a coating for fast drying, smudge resistant images, and bright vibrant colours.

■ BG-32 Plus 				
Clear	0.100 mm	50	210 mm x 297 mm	29300.100.44100
Polyester	0.100 mm	500	210 mm x 297 mm	29300.100.44800
	0.100 mm	50	297 mm x 420 mm	29300.100.43100
	0.100 mm	500	297 mm x 420 mm	29300.100.41800
■ BG-32.5 RS Plus   				
Clear	0.100 mm	20	210 mm x 297 mm	29305.100.52000
Polyester	0.100 mm	50	210 mm x 297 mm	29305.100.44100
Removable stripe short side	0.100 mm	50	297 mm x 420 mm	29305.100.43100

## PREMIUM UNIVERSAL OHP FILM

Universal film for creating professional OHP presentations. The film has a one side Ink Jet coating for fast drying, smudge resistant images, and bright vibrant colours. The reverse side has a special surface coating for mono and colour laser printers and copiers which offers outstanding toner adhesion.

■ BG-40.5 RS       				
Clear	0.100 mm	50	210 mm x 297 mm	29405.100.44100
Polyester				
Removable stripe short side				



# WRITE ON

## WRITE ON FILMS

Visualise spontaneous ideas during conferences or presentations. Pre-coated films accept all commercially available OHP pens, both permanent and non-permanent. It is available in boxes, rolls or pad.

Clear film sheets which will accept all commercially available OHP pens, both permanent and non-permanent, interleaved with paper for protection.

### ▪ WOF Sheet

Clear Polyester	0.100 mm	100	210 mm x 297 mm	25005.100.44000
--------------------	----------	-----	-----------------	-----------------

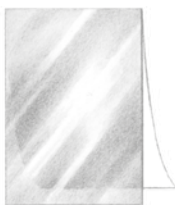
Clear film on rolls which will accept all commercially available OHP pens, both permanent and non-permanent.

### ▪ WOF Roll

Clear Polypropylene	0.030 mm	1	297 mm x 30 m	24800.030.20303
------------------------	----------	---	---------------	-----------------



Film without attachment



Film paper-backed short side



Film paper-backed long side



Film with removable stripe short side



Film with removable stripe long side



***folex***<sup>®</sup>

Folex AG  
Bahnhofstrasse 92  
6423 Seewen SZ  
Switzerland  
phone +41 41 819 39 39  
fax +41 41 810 01 35  
int.sales@folex.ch  
www.folex.com

Folex Limited  
Cranmore Place  
Cranmore Boulevard  
Solihull  
West Midlands B90 4RZ  
Great Britain  
phone +44 121 733 3833  
fax +44 121 733 3222  
sales@folex.co.uk  
www.folex.co.uk

Folex Coating GmbH  
Unnauer Weg 6c  
50767 Köln  
Germany  
phone +49 221 97 94 79 0  
fax +49 221 97 94 79 9  
info@folex.de  
www.folex.de

Regulus GmbH  
Paul-Gossen-Str. 114  
91052 Erlangen  
Germany  
phone +49 9131 3002 0  
fax +49 9131 1349 9  
info@regulus.de  
www.folex.com